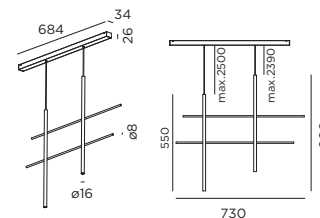
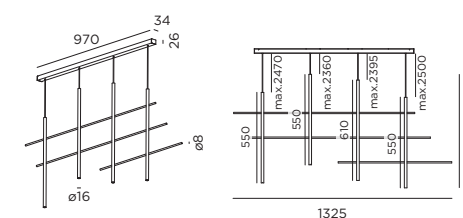


DIMENSIONS

2.0

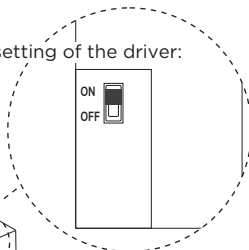
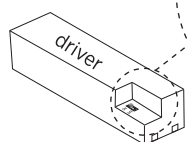


4.0



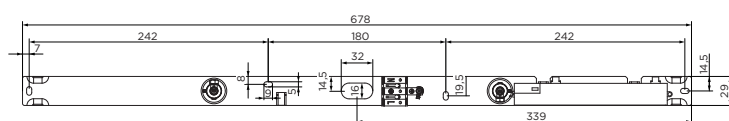
! Do not change the standard settings of the driver!

The standard setting of the driver:

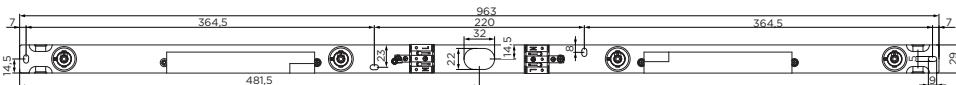


Mounting base:

2.0



4.0

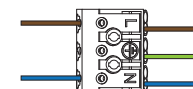


MOUNTING INSTRUCTION

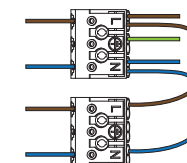
1 Remove the mounting base by loosening the socket screws and fix it to the ceiling with screws (screws are not included).

2 **POWER CONNECTION**
Connect to 220-240V.

2.0



4.0



Connect the earth cable.



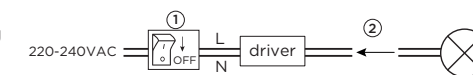
3 Fix the cover to the mounting base with the socket screws.

4 For how to reduce the cable length, please see page 2.



Driver must be powered off before connecting the cables.

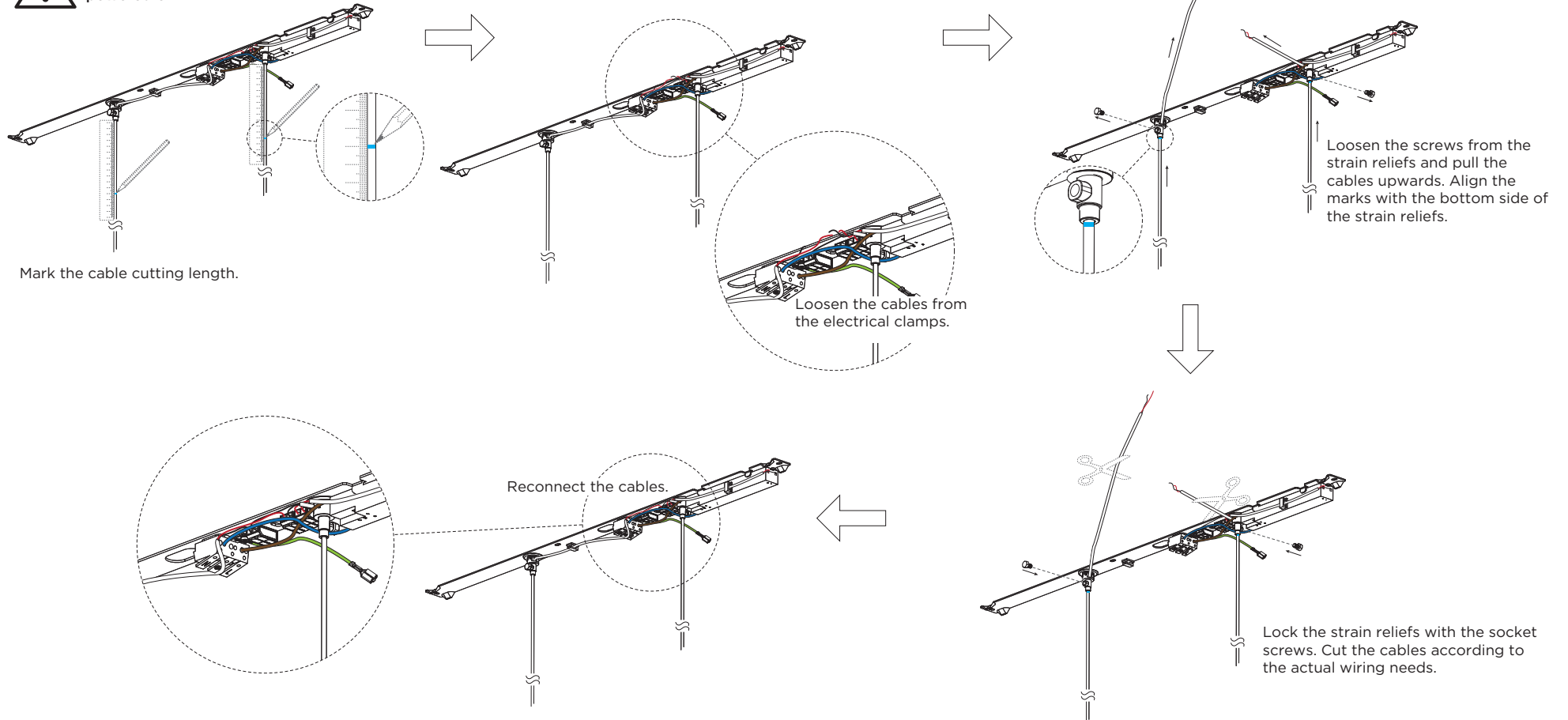
Before connecting the luminaire/LED module to the driver please make sure the driver is not powered but disconnected from the mains. The driver can only be powered when the luminaire/LED module is already connected. Disregarding this instruction might damage or even destroy the luminaire/LED module.

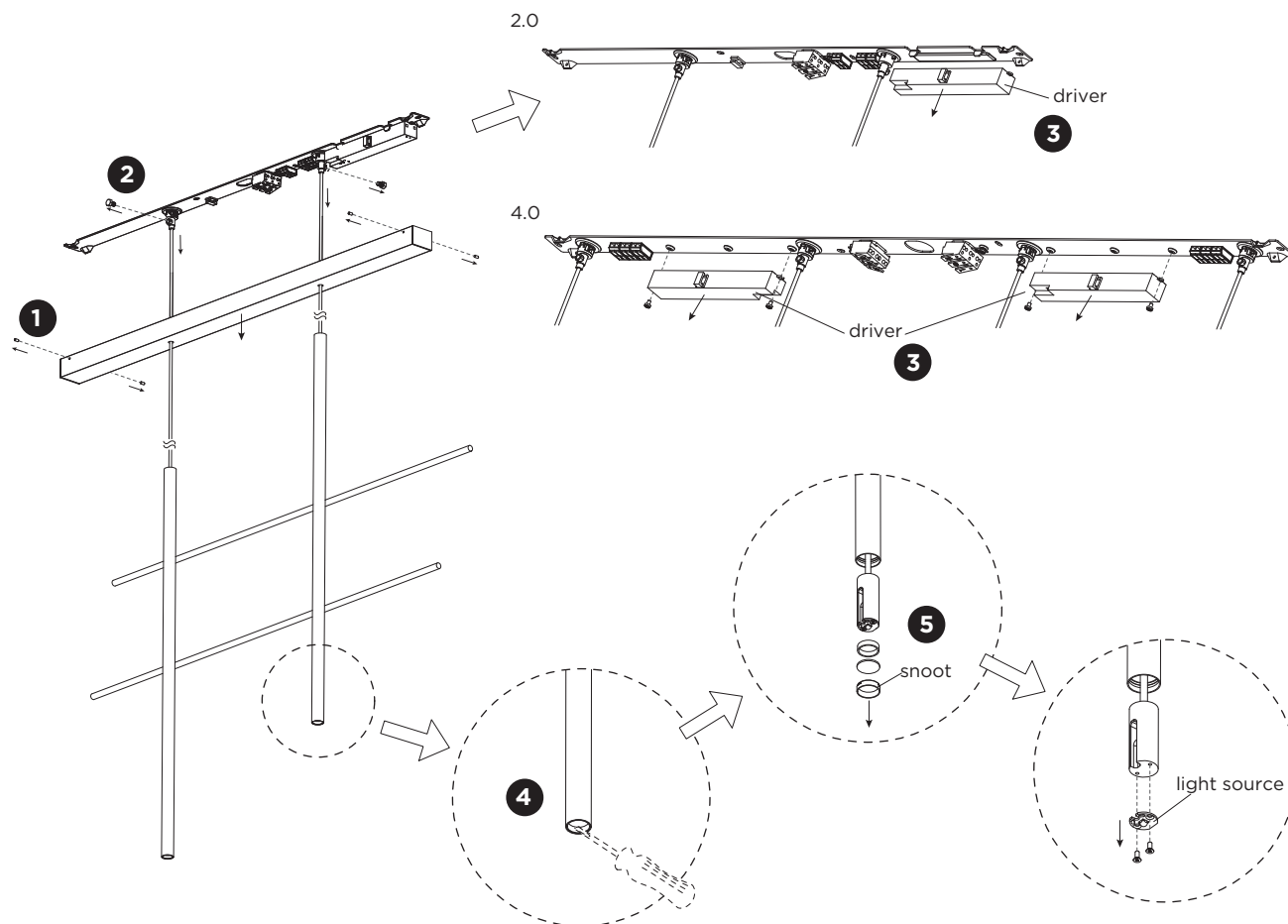


4 How to reduce the cable length.



Driver must be powered off.

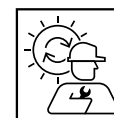




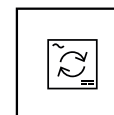
DISMOUNTING AND RECYCLING INSTRUCTIONS

Light source & driver

- 1** Dismount the cover of the ceiling base by loosening the socket screws.
- 2** Loosen the wires, release the socket screws that are locking the cables and separate the cables together with the cover and the lamp tubes combination from the mounting base.
- 3** For 2.0 - pull off the driver.
For 4.0 - loosen the screws to remove the driver(s).
- 4** Remove the snoot(s) with a flat screwdriver,
- 5** Remove the lens(es) and ring(s) and loosen the screws to remove the light source(s).



The light source is replaceable by Wever & Ducré or by a professional with explicit authorisation. For more information please contact your local Wever & Ducré customer service point.



The driver can be replaced by the end user.



This luminaire contains a light source with the energy class G.

