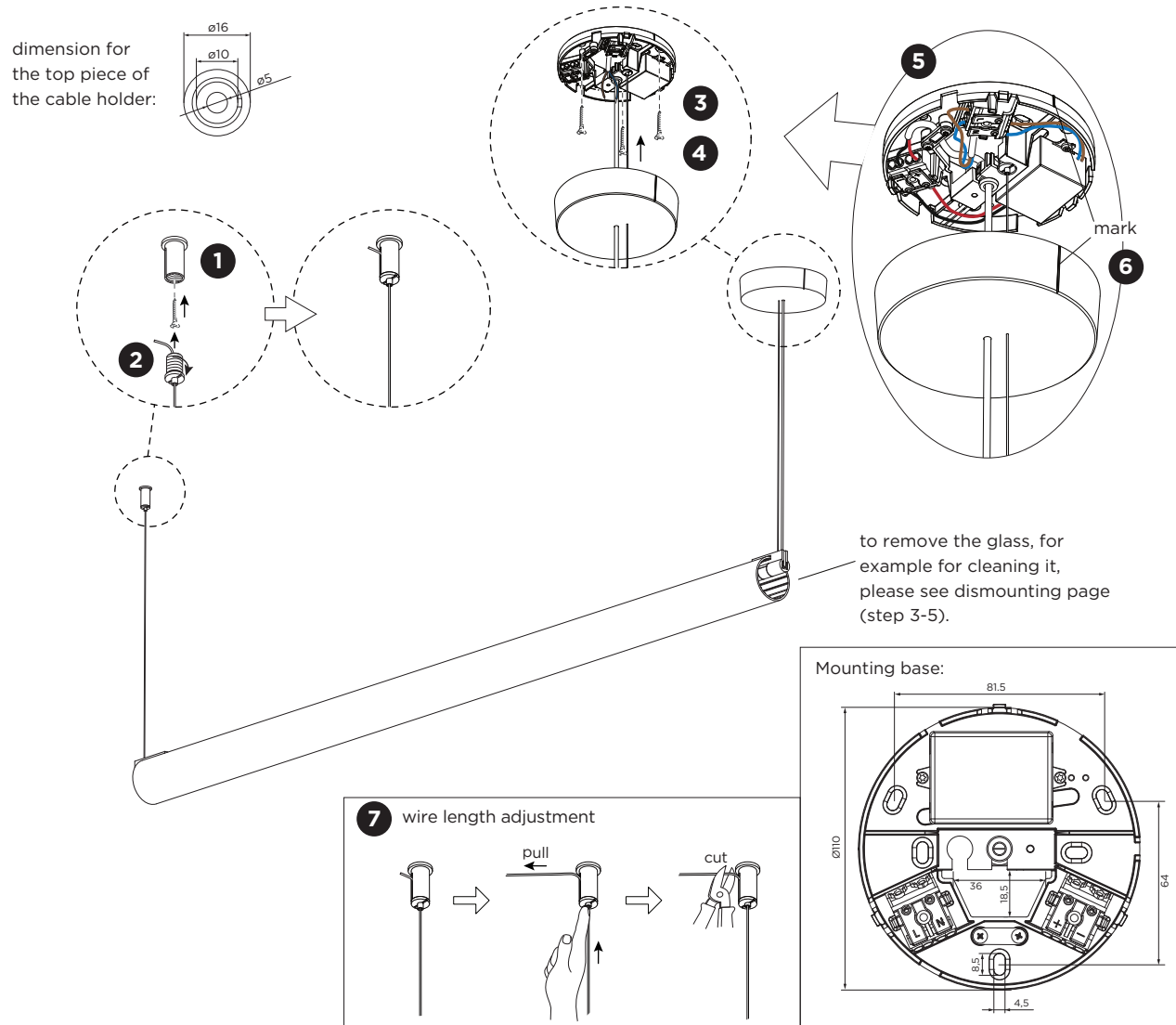
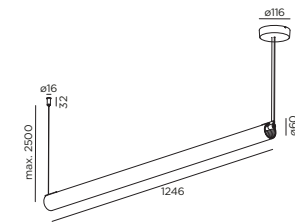


FINELLE

INSTALLATION INSTRUCTIONS | DECEMBER 2024

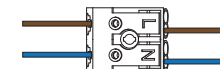


DIMENSIONS



MOUNTING INSTRUCTION

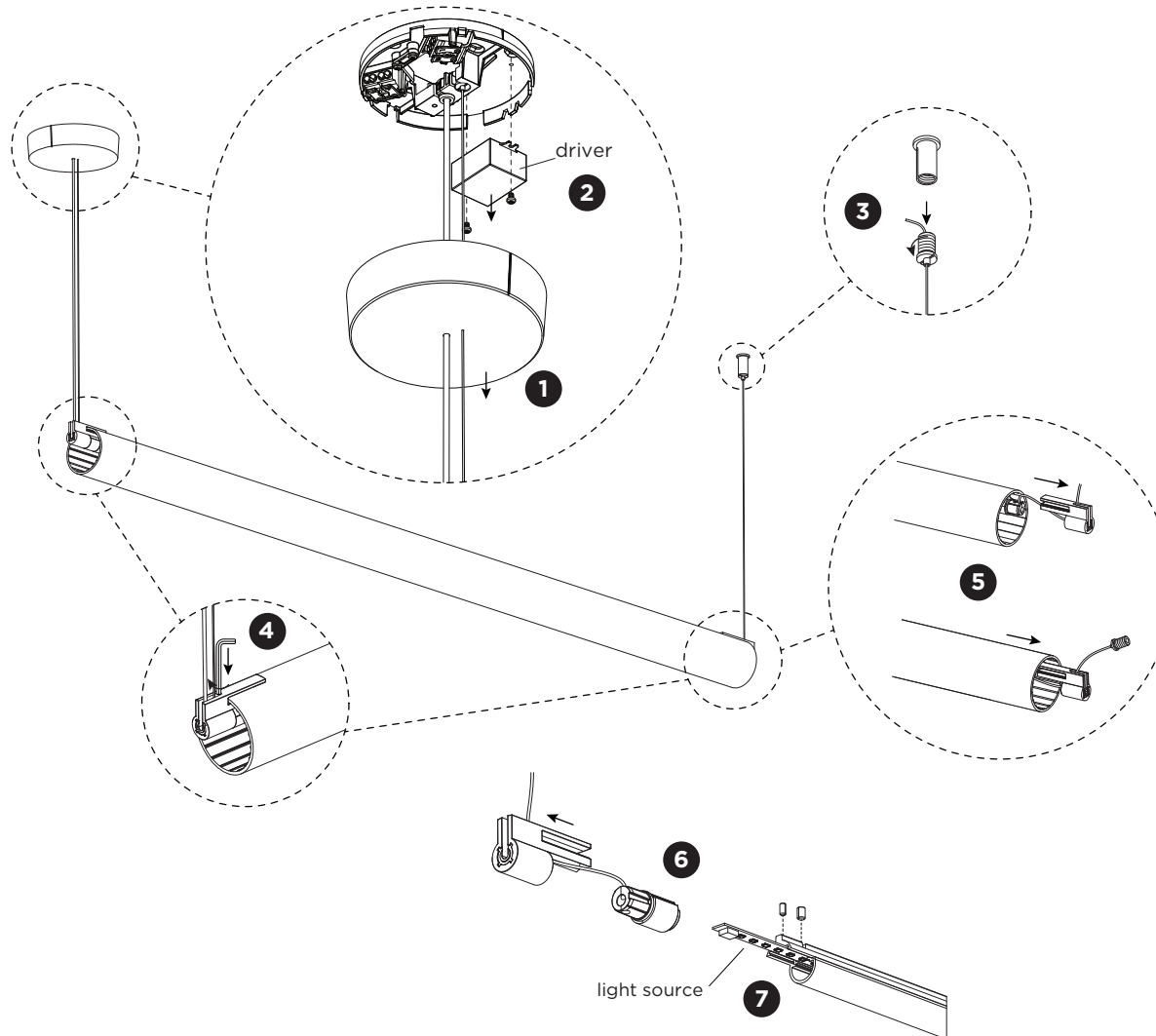
- 1** Screw out the top pieces of the cable holders and fix them on the ceiling with screws (screws are not included).
- 2** Screw the cable holders back to the top piece.
- 3** Remove the cover of the mounting base by pulling and mount the base on the ceiling with screws (screws are not included).
- 4** Optional: shorten the cable to your required length. The driver must be powered off before disconnecting and connecting the cables.
- 5** **POWER CONNECTION**
Connect to 220-240V.



- 6** Align the marks on both of the mounting base and the cover. Push the cover on the mounting base until it clicks.
- 7** Adjust the steel wire to the required length.

FINELLE

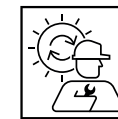
INSTALLATION INSTRUCTIONS | DECEMBER 2024



DISMOUNTING AND RECYCLING INSTRUCTIONS

Light source & driver

- 1 Pull down the cover from the mounting base.
- 2 Disconnect the wires and unscrew the driver to remove it.
- 3 Unscrew the cable holder from the top piece.
- 4 Screw the socket screw into the glass clip on both sides.
- 5 Pull off the glass clip and pass all the parts through the inside of the glass to remove the glass.
- 6 Pull off the glass clip on the other side and unscrew the socket screws to remove the cover.
- 7 Disconnect the wires and slide out the light source to remove the light source.



The light source is replaceable by Wever & Ducré or by a professional with explicit authorisation. For more information please contact your local Wever & Ducré customer service point.



The driver can be replaced by the end user.



This luminaire contains a light source with the energy class E.



WEVER & DUCRÉ
LIGHTING

WEVER & DUCRÉ BV

Spinnerijstraat 99/21, 8500 Kortrijk, Belgium
weverducre.com